

Sustainable, complete and full of life:

Compact 224



With the new Compact 224 model, the world of the organ is now available to any organist in any situation. Our in-house Invention Technology® is now available in a two manual portable format for the student, teacher, choir or continuo player. The sturdy but compact cabinet, with extensive use of solid oak, is simplicity itself to move and enables the instrument to be used in a completely multifunctional way.

Compact 224



*Portable.
easy to carry*

*Optional
standard. pedal board*

*Optional
bench*

Flexibility

The Compact 224 is a very versatile organ. It is therefore available with various options. As standard, it is fitted with 2x30Watt digital amplifiers, but it is also available with 4x180Watt digital amplifiers. By then adding the Content 'Home 8' High Quality audio system, the sound of the instrument is improved considerably. This would be especially useful

when this portable instrument is installed in a larger room or a church. Of course, it is possible to connect your own speakers to the organ or use headphones. Additionally, there is optional an expression pedal, a pedal board, bench and a stand which can all be added to the organ to increase its flexibility and mobility.

Important features

- 2 Manuals
- Console featuring extensive use of solid wood
- 4 Independent specifications of stops; Baroque, Classic, Romantic or Symfonic
- 4 x 24 Speaking stops
- 384 Programmable presets per organ style
- 2 x 30 Watts amplifiers (option 4x 180 Watts)
- VPP Virtual Player Position
- Cantus Firmus
- Automatic Pedal
- Over 54 historical temperaments
- PCC Personal Control Center
- Windchest
- Standard in light or medium oak
- Optional:
 - Pedal 27/30 note, Expression pedal, Bench & External Speakers
- Additional options please consult your dealer or our pricelist

Dispositions

Baroque		Classic		Romantic		Symphonic	
Pedal	5	Pedaal	5	Pédalier	5	Pedal	5
Subbass	16'	Subbas	16 Vt	Contrebasse	16	Open Wood	16'
Oktavbass	8'	Octaaf	8 Vt	Soubasse	16	Bourdon	16'
Choralbass	4'	Gedekt	8 Vt	Basse	8	Principal	8'
Posaune	16'	Octaaf	4 Vt	Flûte	8	Bass Flute	8'
Cornet	4'	Fagot	16 Vt	Bombarde	16	Trombone	16'
Koppel Ped-Hw		Koppel Ped-Hw		Tirasse Grand Orgue		Great to Pedal	
Koppel Ped-RP		Koppel Ped-Bw		Tirasse Récit Expressif		Swell to Pedal	
Hauptwerk	9	Hoofdwerk	9	Grand Orgue	9	Great	9
Quintadena	16'	Bourdon	16 Vt	Bourdon	16	Bourdon	16'
Prinzipal	8'	Prestant	8 Vt	Montre	8	Open Diapason	8'
Rohrflöte	8'	Roerfluit	8 Vt	Flûte Harmonique	8	Stopped Diapason	8'
Oktave	4'	Octaaf	4 Vt	Bourdon	8	Principal	4'
Spitzflöte	4'	Speelfluit	4 Vt	Prestant	4	Suabe Flute	4'
Nasat	3'	Octaaf	2 Vt	Flûte	4	Twelfth	2 2/3'
Super Oktave	2'	Cornet	5 St.	Doublette	2	Fifteenth	2'
Mixtur	IV fach	Mixtuur	4 St.	Plein Jeu	5 rgs.	Mixture	IV rks.
Trompete	8'	Trompet	8 Vt	Trompette	8	Trumpet	8'
Tremulant		Tremulant		Tremblant		Tremulant	
Koppel Hw-RP		Koppel Hw-Bw		Accouplement Réc-G.O.		Swell to Great	
Rück Positiv	10	Bovenwerk	10	Récit	10	Swell	10
Gedackt	8'	Baarpijp	8 Vt	Diapason	8	Stopped Diapason	8'
Quintadena	8'	Quintadeen	8 Vt	Cor de Nuit	8	Salicional	8'
Prinzipal	4'	Prestant	4 Vt	Viole de Gamba	8	Vox Angelica	8'
Blockflöte	4'	Fluit	4 Vt	Voix Céleste	8	Principal	4'
Oktave	2'	Nasard	3 Vt	Flûte Octaviant	4	Flute	4'
Quinte	1 1/2'	Gemshoorn	2 Vt	Octavin	2	Fifteenth	2'
Sesquialtera	II fach	Flageolet	1 Vt	Basson	16	Mixture	III rks.
Scharff	IV fach	Sesquialter	3 St.	Trompette	8	Fagotto	16'
Regal	16'	Schalmeij	8 Vt	Basson-Hautbois	8	Cornoepen	8'
Dulzian	8'	Vox Humana	8 Vt	Clairon	4	Hautboy	8'
Tremulant		Tremulant		Trémolo		Tremulant	

A complete organ

Whilst this instrument is completely portable, it is in all other respects completely equal to our other instruments. It still has the four organ specifications (Baroque, Classic, Romantic and Symphonic) each having their own samples and distinctive disposition.

Our innovative Invention Technology® gives an unmatched realistic, detailed and refined sound. Due to the choice between internal or external (HQ) audio, the Compact 224 is more flexible than any other organ can be.



Compact 224

Specification

Organ styles	
Baroque (Schnitger style)	24
Pedal	5
Hauptwerk	9
Rück Positiv	10
Classic (Bätz - Witte style)	24
Pedaal	5
Hoofdwerk	9
Bovenwerk	10
Romantic (Cavaillé-Coll style)	24
Pédalier	5
Grand Orgue	9
Récit	10
Symphonic (English influences)	24
Pedal	5
Great	9
Swell	10
Voice library	96

Accessories	
Tremulants	2
Couplers	3
AP (Automatic Pedal) programmable	•
MB (MonoBass) range adjustable	•
TA (Reeds off)	-
CF (Cantus Firmus)	-
V.P.P. (Virtual Player Position): Console / Front / Church	•
Organ Select: Baroque / Classic / Romantic / Symphonic	•
Foot Pistons	-
Extra voice	-

Features	
Keyboards, 5 octaves (C-c ⁴)	2
27-notes (C-f) parallel pedal board	option
30-notes (C-f) parallel pedal board	option
30-notes (C-f) concave pedal board	option
30-notes (C-f) radial concave pedal board	option
Expression pedal	option
General Crescendo (programmable to existing expression pedal)	-
Height / Height incl. music rack (cm)	21 / 42
Width (cm)	90
Depth (without pedal board in cm)	48
Weight (Kg)	22
Bench with music storage	option
Bench height adjustable	option
Other Stairs	option
Music rack illumination (LED)	-
Pedal board illumination (LED)	-

PCC (Personal Control Center)	
Easy Main Menu	
Transposer (g-g#-a-a#-b-C-c#-d-d#-e-f)	•
Pitch / Fine tuning (420-472 Hertz)	•
Chorus	0-15
Reverberation Volume	0-15
General Volume	1-16
Memory Bank	1-64
Organ settings (adjustable per division)	
Temperament	54
Reverberation	•
Volume Balance:	
- Volume main	1-32
- Volume Surround	1-32
- Volume H.T. & Line-out	1-32
Division Volume (per division)	•
Tremulant (depth and speed per division)	•
Monobass	1-32
Manual Compass	•
Expression pedal (adjudge to a particular division or as Crescendo pedal)	•
Bellow Stability (program and depth adjustable)	•
Reset Setser System	•
ODF-version (organ data version)	•
Stop settings	
Volume (general and per individual key)	•
Wind (general and per individual key)	•
Chorus (general and per individual key)	•
Contour (general and per individual key)	•
Fluctuation (general and per individual key)	•
Wind-chest	•
Save & Reset menu	•
Playlist (select per organ style)	•
V.P.P. (Virtual Player Position) menu: Console / Front / Church	•

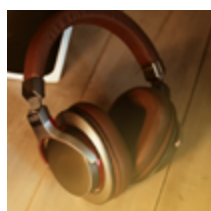
Capture System	
Memory Bank (64 per organ style)	256
Crescendo Bank (1 per organ style)	-
Set	•
Presets (Programmable)	6
HR (Hand Registration)	•
Preset Sequencer ◀ ▶	•
Tutti (programmable per organ style)	-
Cancel (O)	•
Divisional capture system	-
Total number programmable presets	1536

Audio	
System (multi channel)	MC
Channels	6
Speakers	option
Digital Amplifiers (dynamic power 6 x 30 Watts)	•
Digital Amplifiers (dynamic power 4 x 180 Watts)	option
External Surround	option
General Volume Control through PCC	•
Reverb Volume Control through PCC	•

In and Outputs	
MIDI In - Out - Thru	•
Line-IN	Stereo
Line-OUT	Stereo
Headphone connector (16-32Ω)	•

• Standard / - Not possible

Options



© All rights reserved. Models and specifications may change without notification. Please be informed that pictures on this file may be different from the standard version. Appearance and options of the models on this file may vary according to local requirements. You are kindly invited to accurately verify the specifications of the individual models with your supplier.